

Appendix 2 Tables and Graphs

TableA-1 Descriptive Statistics (Average and Standard Deviation for 47 region)

Raw Series (Non Seasonally-adjusted)

	1996	1997	1998	1999	2000	2001
Placement	32,855	33,780	35,056	36,811	39,684	40,138
(Standard dev.)	(33,686)	(33,917)	(34,134)	(34,129)	(35,021)	(35,172)
In Stock Vacancy	220,287	238,602	197,391	183,412	226,383	239,827
(Standard dev.)	(173,252)	(188,514)	(162,994)	(156,046)	(200,623)	(233,646)
In Stock Unemployment	392,209	409,881	474,501	503,018	497,433	513,718
(Standard dev.)	(391,620)	(408,767)	(470,243)	(496,902)	(482,868)	(479,231)
V/U	0.654	0.678	0.476	0.412	0.503	0.482
(Standard dev.)	(0.219)	(0.232)	(0.159)	(0.129)	(0.157)	(0.138)
In Flow Vacancy	135,549	142,613	125,643	124,730	149,599	151,880
(Standard dev.)	(109,325)	(114,861)	(104,343)	(104,914)	(131,624)	(143,847)
In Flow Unemployment	113,571	118,871	137,133	142,937	142,602	149,707
(Standard dev.)	(391,620)	(408,767)	(470,243)	(496,902)	(482,868)	(479,231)
share_v90	0.664	0.673	0.693	0.698	0.713	0.706
(Standard dev.)	(0.057)	(0.063)	(0.060)	(0.051)	(0.055)	(0.059)
share_v50	0.929	0.933	0.933	0.935	0.936	0.938
(Standard dev.)	(0.022)	(0.019)	(0.024)	(0.021)	(0.018)	(0.023)

Note; 1 share_v90(50) is market share of vacancies created by greatest 10%(50%) firms.

2 All series are non-seasonally adjusted, while share indexes are exponentially smoothed over every 6 month

3 Average of 47 regions, over every fiscal year (April-March)

Table A-2 Descriptive Statistics (Year 2001)

	Mean	Standard Deviation	Max	Min
ln(Matching)	7.872	0.631	11.285	6.519
ln(Vacancy)	9.588	0.743	11.721	8.313
ln(Unemployment)	10.359	0.731	12.257	9.002
Vacancy share of greatest 10% firms	0.706	0.060	0.854	0.550
Vacancy share of greatest 50% firms	0.938	0.023	1.000	0.843
Average Vacancy Size per Firm	2.289	0.847	5.893	1.084
Average Firm Size (Employee Number)	31.893	96.080	5,329	5

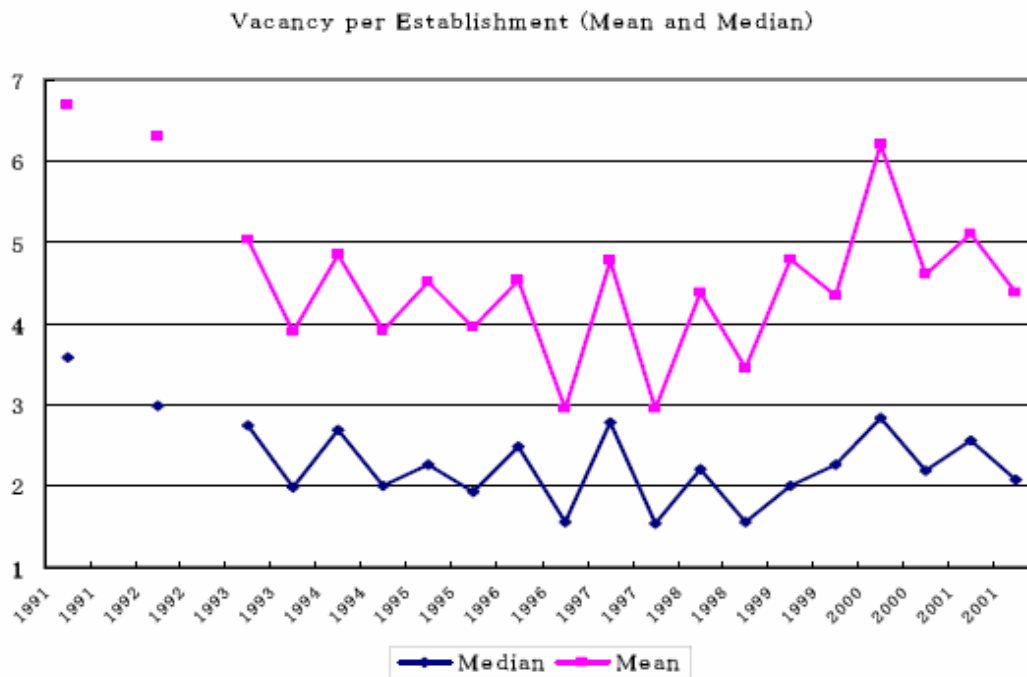
Table A-3 Vacancy Frequencies and Rates by Establishment Size, in the 1990s

Cross tabulation of establishments, by size					
1991 1-6	500+	100-499	30-99	5-29	Total
Fraction reporting vacancies >0	.989	.951	.856	.580	.833
Mean number of vacancies for those with >0	118.28	22.99	8.13	3.61	9.50
Mean vacancy creation rate, for those with >0	.135	.145	.182	.341	.261
Mean unsatisfied vacancy rate	.110	.222	.293	.407	.342
Mean vacancy creation rate, overall	.134	.138	.154	.196	.179
Proportion of vacancies created, by size	9.66	19.3	22.5	48.5	100

Cross tabulation of establishments, by size					
1996 1-6	500+	100-499	30-99	5-29	Total
Fraction reporting vacancies >0	.946	.890	.788	.472	.771
Mean number of vacancies for those with >0	47.51	14.28	5.50	2.73	5.07
Mean vacancy creation rate, for those with >0	.056	.098	.130	.279	.220
Mean unsatisfied vacancy rate	.025	.058	.113	.166	.140
Mean vacancy creation rate, overall	.053	.090	.103	.135	.126
Proportion of vacancies created, by size	5.95	16.7	25.0	52.4	100

2001 1-6	Cross tabulation of establishments, by size				
	500+	100-499	30-99	5-29	Total
Fraction reporting vacancies >0	.952	.859	.710	.396	.712
Mean number of vacancies for those with >0	63.10	14.30	6.07	2.49	5.41
Mean vacancy creation rate, for those with >0	.084	.094	.148	.264	.215
Mean unsatisfied vacancy rate	.056	.052	.073	.114	.097
Mean vacancy creation rate, overall	.081	.082	.104	.102	.102
Proportion of vacancies created, by size	8.75	19.2	27.2	44.9	100

FigureA-1



Note: Mean (median) is the weighted average of mean vacancy numbers per establishment in every regional labor market.

Figure A-2 Median Vacancy Size per Establishment by Size

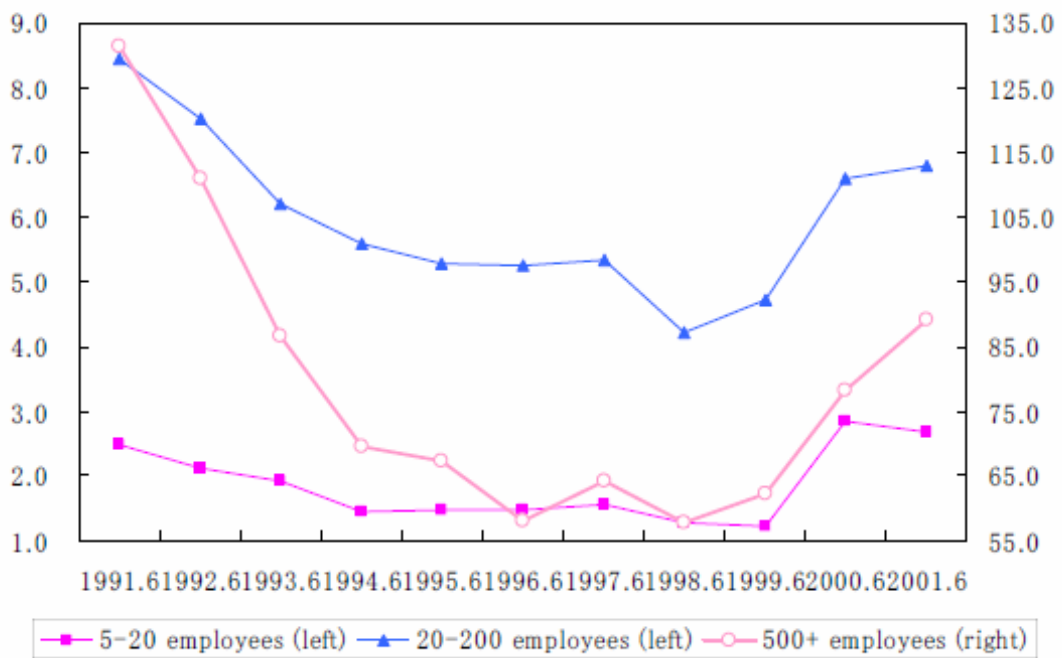


Figure A-3 Unsatisfied Vacancy Rate by Size

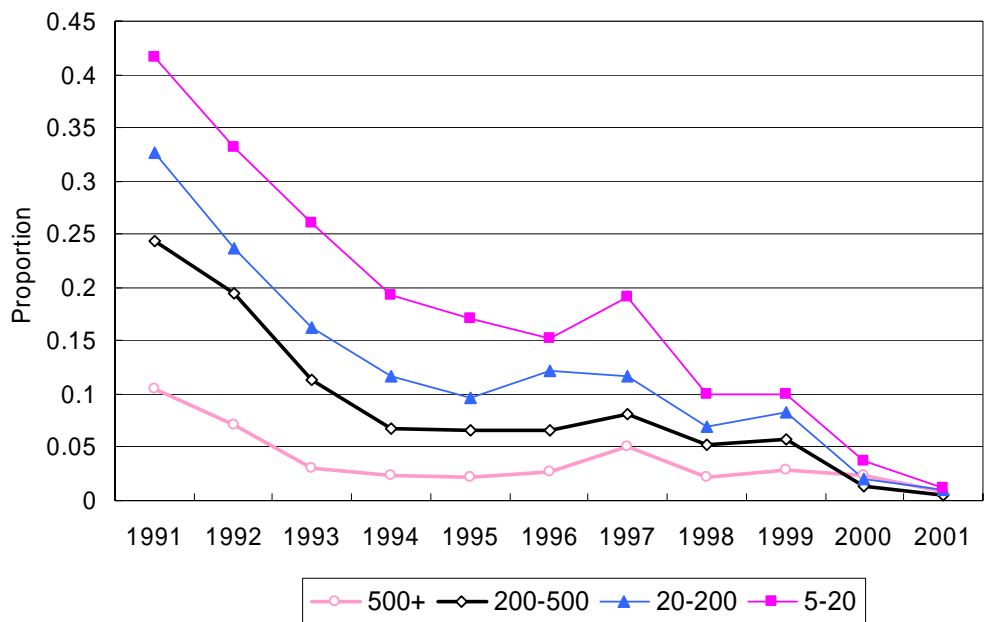


Table A-4 Other Estimation Results

1) Non-seasonally adjusted data, with various market shares (1)

	Fixed Effects (within)			Fixed Effects (within)			Fixed Effects (within)			Fixed Effects (within)		
	Coef.	Std. Err.	P>t	Coef.	Std. Err.	P>t	Coef.	Std. Err.	P>t	Coef.	Std. Err.	P>t
In Vacancy(Stock)	0.48	0.01	0.000	0.48	0.01	0.000	0.48	0.01	0.000	0.49	0.01	0.000
In Unemployment(Stock)	0.87	0.02	0.000	0.81	0.02	0.000	0.81	0.02	0.000	0.80	0.02	0.000
Market share of v by greatest 5% firms		-		0.08	0.03	0.014		-			-	
Market share of v by greatest 10% firms		-			-		0.14	0.04	0.001		-	
Market share of v by greatest 25% firms		-			-			-		0.46	0.09	0.000
Constant	-5.75	0.22	0.000	-16.94	3.74	0.000	-15.82	3.77	0.000	-13.34	3.83	0.000
Monthly Dummy		yes			yes			yes			yes	
Trend		yes			yes			yes			yes	
N		3384			3384			3384			3384	
R-sq		within=0.7095, between=0.8895, overall=0.8563			within=0.7099, between=0.8890, overall=0.8577			within=0.7104, between=0.8892, overall=0.8579			within=0.7115, between=0.8895, overall=0.8584	
F statistics		579.66			542.04			543.29			546.19	
corr(u _i , X _b)		-0.8608			-0.8324			-0.833			-0.8322	

2) Non-seasonally adjusted data, with various market shares (2)

	Fixed Effects (within)			Fixed Effects (within)			Fixed Effects (within)			Fixed Effects (within)		
	Coef.	Std. Err.	P>t	Coef.	Std. Err.	P>t	Coef.	Std. Err.	P>t	Coef.	Std. Err.	P>t
In Vacancy(Stock)	0.57	0.02	0.000	0.48	0.01	0.000	0.58	0.02	0.000	0.48	0.01	0.000
In Unemployment(Stock)	0.93	0.29	0.000	0.81	0.02	0.000	0.94	0.03	0.000	0.81	0.02	0.000
Vacancy Share (Greatest 10%)	-0.26	0.05	0.000	0.14	0.04	0.001		-			-	
Employee Share (Greatest 10%)		-			-		0.18	0.13	0.162	-0.13	0.09	0.180
Constant	-7.08	0.37	0.000	-5.23	0.31	0.000	-7.51	0.37	0.000	-4.97	0.31	0.000
Monthly Dummy		no			yes			no			yes	
Trend		yes			yes			yes			yes	
N		3384			3384			3384			3384	
R-sq		within=0.4564, between=0.891, overall=0.8292			within=0.7104, between=0.8892, overall=0.8579			within=0.4521, between=0.8892, overall=0.8275			within=0.7096, between=0.8901, overall=0.8586	
F statistics		699.71			543.29			687.58			541.06	
corr(u _i , X _b)		-0.9138			-0.833			-0.913			-0.8341	

3) Seasonally-adjusted data, with various market shares

	Fixed Effects (within)			Fixed Effects (within)			Fixed Effects (within)			Fixed Effects (within)		
	Coef.	Std. Err.	P>t	Coef.	Std. Err.	P>t	Coef.	Std. Err.	P>t	Coef.	Std. Err.	P>t
In Vacancy(Stock)	0.14	0.01	0.000	0.13	0.01	0.000	0.27	0.01	0.000	0.27	0.01	0.000
In Unemployment(Stock)	0.21	0.03	0.000	0.20	0.03	0.000	0.78	0.00	0.000	0.81	0.01	0.000
Vacancy Share (Top 10%)	0.10	0.03	0.000		-		0.18	0.03	0.000		-	
Employee Share (Top 10%)		-		-0.16	0.05	0.003		-		-0.06	0.06	0.256
Constant	4.16	0.37	0.000	4.16	0.37	0.000	-3.01	0.16	0.000	-3.06	0.16	0.000
Monthly Dummy		no			no			no			no	
Trend		yes			yes			no			no	
N		3384			3384			3384			3384	
R-sq		within=0.6704, between=0.8873, overall=0.8407			within=0.6698, between=0.8896, overall=0.8441			within=0.6263, between=0.8891, overall=0.8792			within=0.6221, between=0.8901, overall=0.8798	
F statistics		1694.75			1690.22			1862.32			1829.68	
corr(u_i, Xb)		0.796			0.7982			-0.6482			-0.6903	

Table A-5

Vacancy and Unemployment, Employment Probabilities (Non-seasonally adjusted series)

		1999											
		1	2	3	4	5	6	7	8	9	10	11	12
Employment Probability		1.59	1.30	4.63	4.59	1.45	1.41	1.31	1.50	1.84	1.67	1.13	1.24
In Vacancy Stock		435.94	440.94	444.10	438.63	440.77	436.92	433.90	439.43	442.81	443.21	445.82	443.94
In Unemployment Stock		480.06	483.27	483.13	483.67	488.74	487.90	486.35	485.49	484.52	484.78	484.43	483.05
In Vacancy Flow		424.22	423.14	427.43	427.39	413.79	419.77	423.86	421.99	425.80	427.00	421.24	415.14
In Unemployment Flow		431.47	419.58	432.27	445.98	427.60	425.28	423.18	422.59	426.37	424.95	418.77	409.60
		2000											
		1	2	3	4	5	6	7	8	9	10	11	12
Employment Probability		1.62	1.58	4.85	4.75	1.62	1.56	1.54	1.89	2.42	2.20	1.47	1.62
In Vacancy Stock		439.30	445.80	449.79	449.70	448.68	446.40	446.37	450.06	453.67	455.23	456.42	455.19
In Unemployment Stock		480.40	483.49	483.86	483.89	488.19	487.43	486.14	484.80	484.05	484.42	484.17	482.00
In Vacancy Flow		429.38	428.97	433.26	429.90	425.73	429.42	430.73	432.94	434.91	436.13	431.11	424.43
In Unemployment Flow		432.62	425.22	432.40	443.49	430.43	425.89	421.52	424.79	426.35	427.09	418.31	413.75
		2001											
		1	2	3	4	5	6	7	8	9	10	11	12
Employment Probability		1.74	1.61	5.27	5.13	2.03	2.27	2.19	2.38	2.99	4.11	2.03	2.31
In Vacancy Stock		450.38	453.99	456.30	455.22	452.23	448.89	446.56	448.59	450.34	449.81	448.67	446.57
In Unemployment Stock		480.15	482.94	483.85	485.19	490.32	490.02	488.86	487.76	487.49	488.12	489.37	488.34
In Vacancy Flow		434.71	433.62	436.09	432.44	428.94	427.68	430.72	429.73	429.78	431.16	427.00	417.00
In Unemployment Flow		432.23	425.75	434.21	446.23	432.82	425.99	426.12	427.23	428.15	435.73	426.17	419.18

Note; Employment Probabilities are the average of 47 regions. All vacancy and unemployment numbers are the sum of 47 regions.